



PENLINK

Heavy Duty Encoders For Harsh Environment Applications

At Penlink, we are driven by our expertise in providing exemplary encoder solutions in the realm of challenging environment. With years of dedicated focus, we pride ourselves on being the team capable of assisting you in selecting the perfect encoder for your specific application.

In this document, we delve into the technical details of our magnetic encoders, aiming to equip you with a deeper understanding of their capabilities and versatility in demanding scenarios.

INTRODUCTION TO HEAVY DUTY ENCODERS

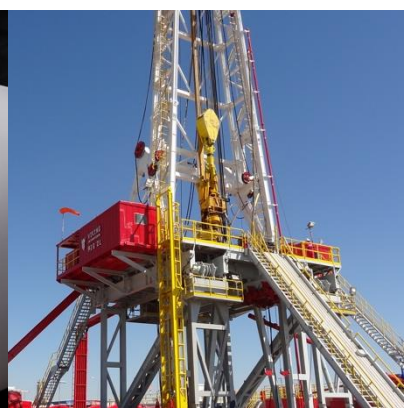
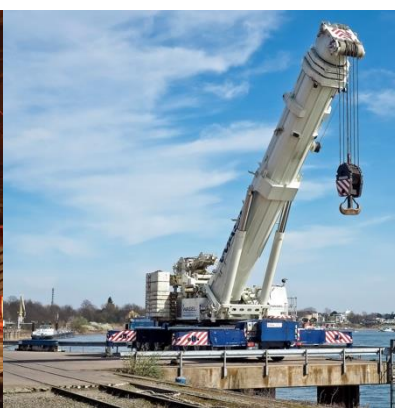
Our Encoders are Ideal Solutions for Heavy Duty Applications

In the world of precision engineering, where demanding environments and rugged applications prevail, the role of heavy duty encoders stands paramount. These robust, high-performance devices are the heroes behind countless industries, ensuring accuracy and reliability in the face of formidable challenges.

The encoders that we offer that can be used in a diverse spectrum of industries, ensuring reliability in mission-critical operations. Beyond encoder solutions, we possess the expertise to seamlessly integrate additional components, customizing our offerings to precisely match your requirements.

The magnetic heavy duty encoders have been tailored to meet the unique needs of various sectors, including:

- Paper Mills
- Metals Production & Processing
- Oil & Gas
- Wind Power
- Cranes and Hoists
- Mining
- Wood Processing
- Railway Applications
- Industrial Applications





KEY FEATURES

Heavy Duty Solution

Our magnetic encoders have been specifically engineered for heavy duty applications. These bearingless encoders are directly installed on motor shafts or applications, ensuring seamless operation. Featuring a wide-gap magnetic reader, they remain functional amidst heavy vibrations and can even withstand the intrusion of oil, dirt, or mud. Cleaning is as simple as using water.

Robust Design

The encoders boast potted electronics that significantly enhance their durability. Housed within removable readers, the electronics offer effortless upgradeability. Some models even incorporate dual readers to provide redundancy. Furthermore, our encoders are engineered to prevent miswiring across all circuits. For applications requiring bearings, we offer models with extra-large bearings designed for heavy duty operations.

Tailored Solutions

Our extensive product range includes various encoder configurations, ensuring we have the perfect fit for your unique needs:

- Oversized Bearings
- Bearingless Encoders
- ATEX Classified
- 5-24V Compatibility
- Wide Temperature Range (-40° to +150°)
- Materials with Corrosion Protection

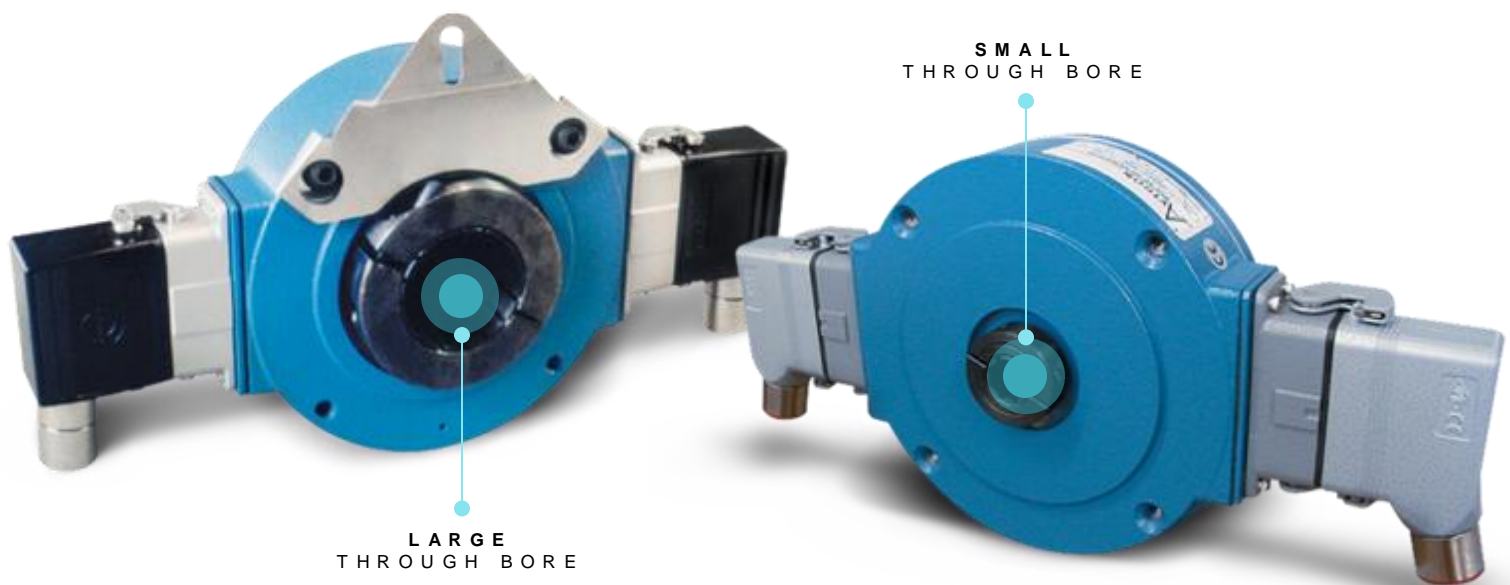
KEY FEATURES

Status LED for Easy Installation

Simplified installation is at your fingertips with our status LED feature. Three distinct colors - green, orange, and red - convey essential information during installation and mounting. A green light signals successful completion, while an orange light indicates miswiring. A red light indicates misalignment and prompts further inspection.

Seamless Integration

Collaborating with our trusted suppliers, we offer integrated solutions tailored to your application's specific needs. This collaborative approach ensures the creation of superior, more reliable products and solutions. Contact us today to discover the endless possibilities when partnering with Penlink.





Get in touch with us today to start
your next project!

WWW.PENLINK.SE

We Are Your Precision Partner In Challenging Environments

Our dedication to engineering excellence goes beyond this document. We understand the complexity of your projects and the need for tailored solutions. Whether you need help picking the right encoder or want to combine our encoders with other components for a unique setup, we're here to assist.

If you're interested in diving deeper into the technical details or starting a collaborative project with us, please contact our experts. Let's discuss your project's specific requirements and explore how we can work together to find the best solutions.

Reach out to us today, and let's start this journey together. We're ready to contribute our technical expertise to your projects, making precision engineering more accessible for you. Contact us now to begin this exciting adventure.

E M A I L

info@penlink.se

P H O N E

+46 (0) 8 401 10 10

H E A D Q U A R T E R S

Penlink AB, Västberga Allé 5,
SE-126 30 Hägersten, Sweden