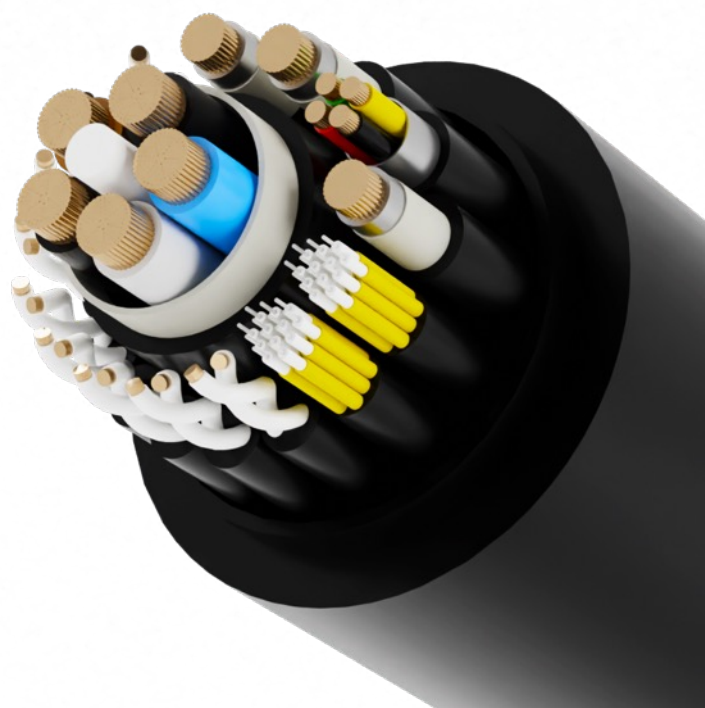


**PENLINK**

INTRODUCTION

Experience More Complex Power and Data Transmission Than Ever Before

Today's and tomorrow's systems require more complex transmission of power and control than ever before. With the increasing expectations of IoT, especially in moving platforms, standard cable reels often fall short of meeting these demands.



**PENLINK SOLUTION**

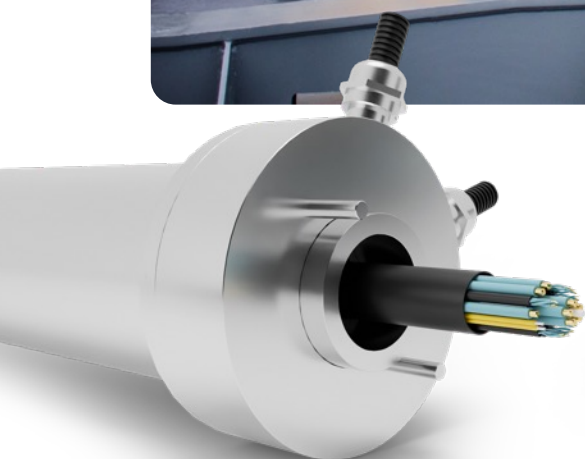
Our Solution: Hybrid Cables

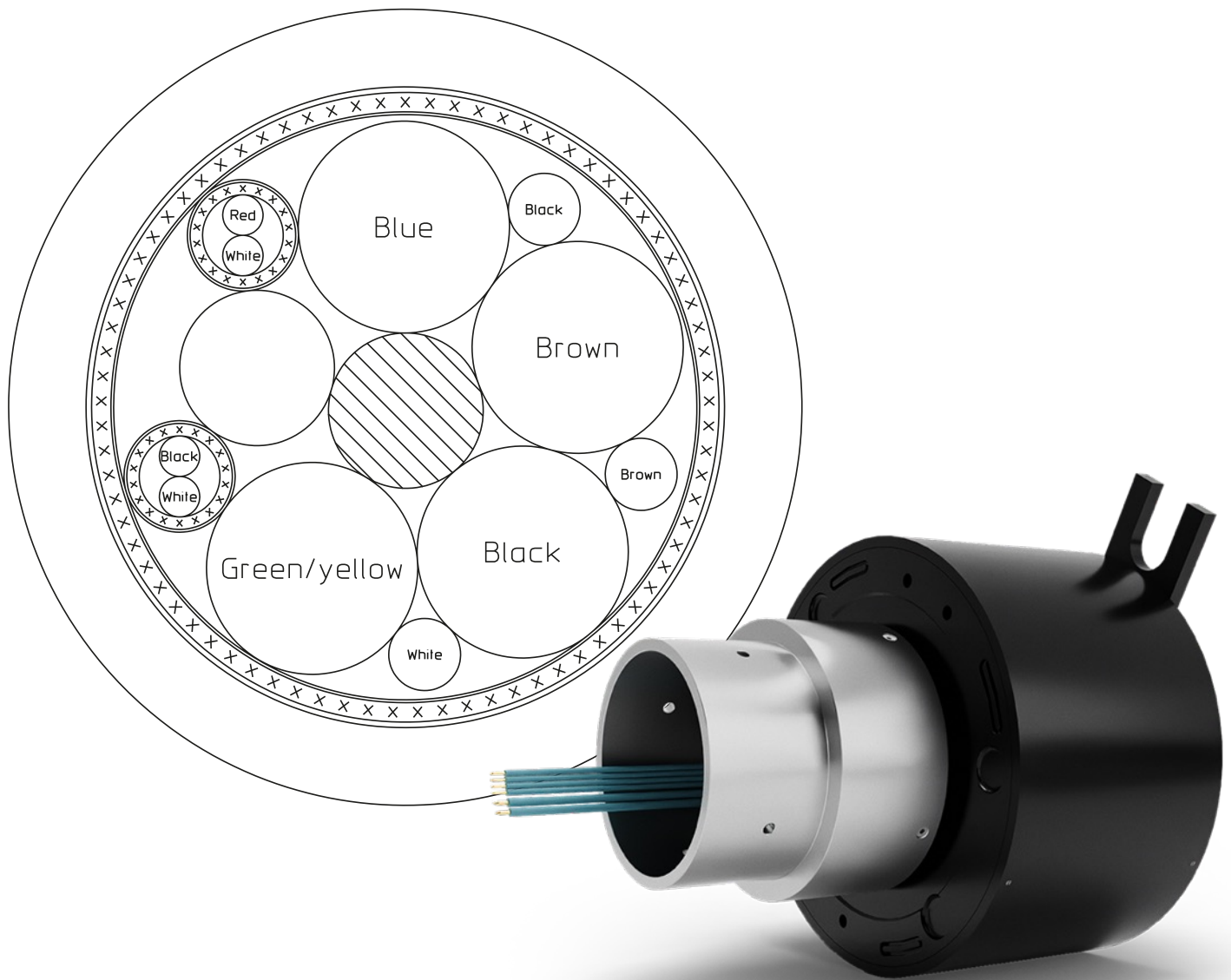
Penlink specializes in supplying customized hybrid cables that combine power transfer with high-bandwidth data, video, and control signals.

Whether it's Ethernet, BUS signals, or fiber optics, we offer customized cables tailored to your application's environmental and mechanical

requirements. These cables can be installed into motorized, spring-driven, or manual cable reels, designed specifically for your application.

Our expertise in developing tailored solutions is demonstrated through various projects.





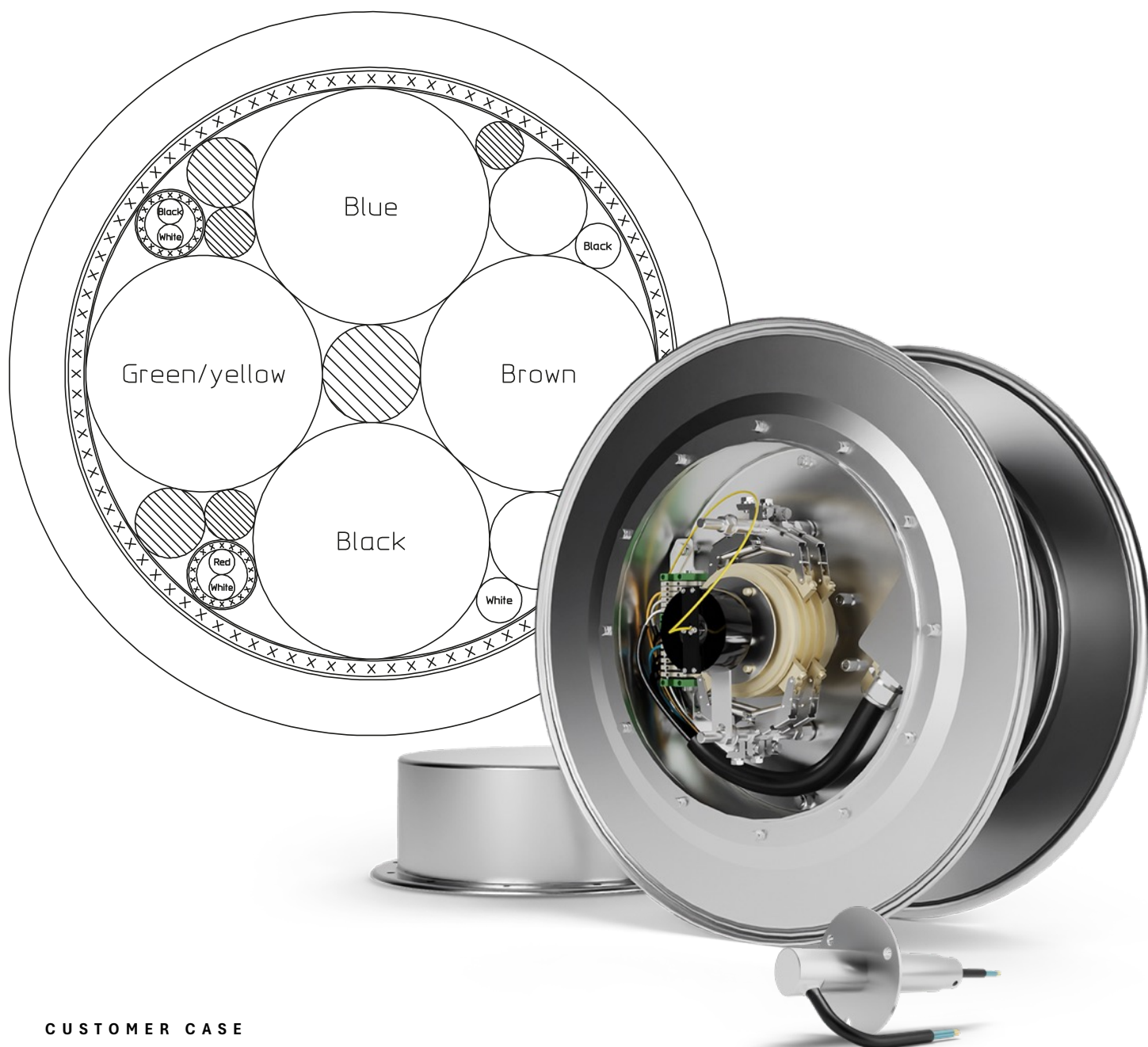
CUSTOMER CASE

Remote Surface Operated Vehicle

In this project, the customer initially used a cable combining power and analogue video. However, the end customer's requirement for more cameras and better control necessitated a new solution.

Penlink developed a cable with integrated fiber optics combined with power circuits. The fiber is immune to EMC, allowing several HD videos and analogue control signals to be transferred without disturbance.

The cable and slip ring are delivered on both spring-driven and motorized cable reels, with cable ranges from 4x6mm² power up to 35mm² power combined with fiber. These cables are ruggedized for harsh environments.

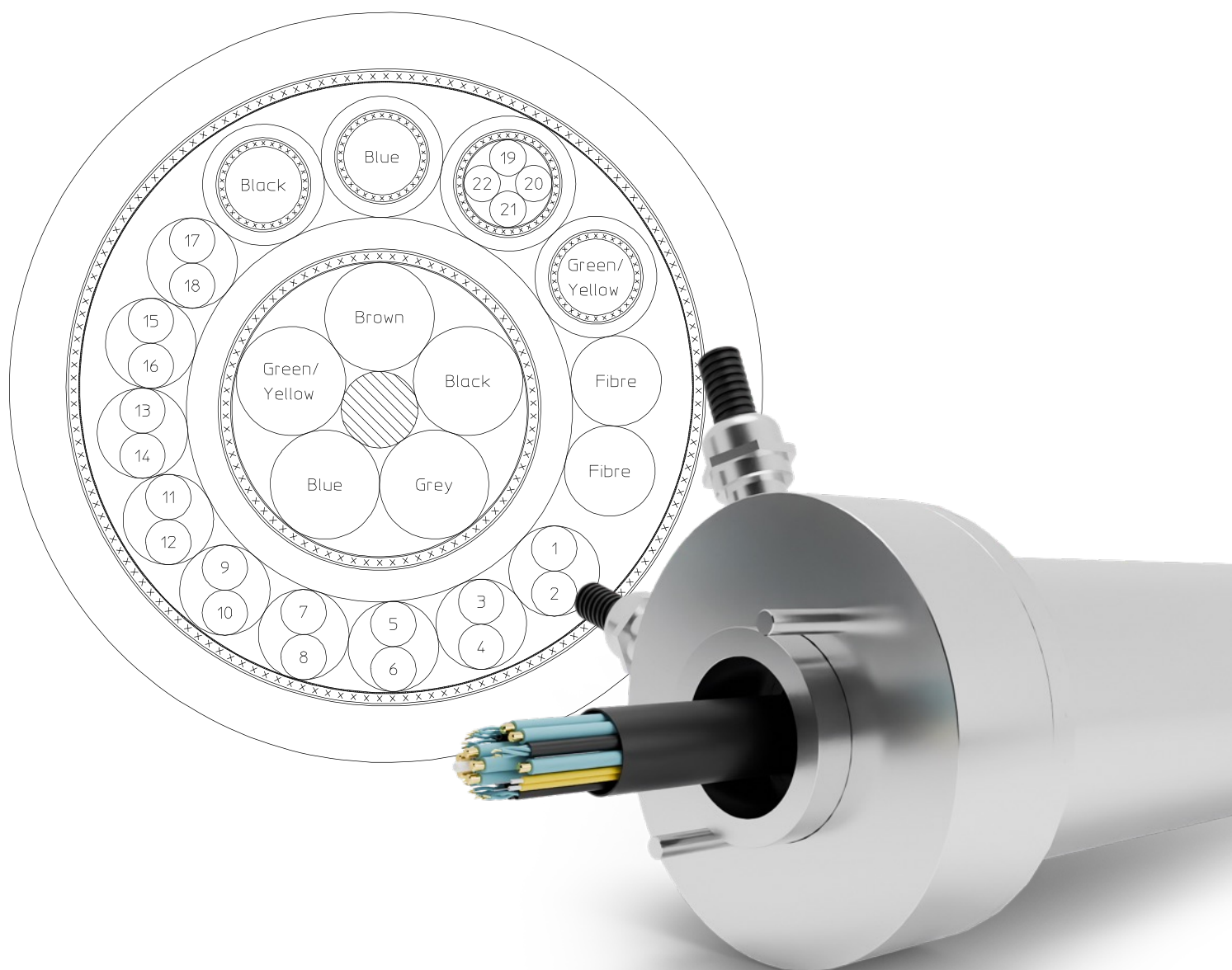


CUSTOMER CASE

Video Pan and Tilt to a Telescopic Boom

In this project, the customer used a flex cable for transferring video, power, and control signals to their pan and tilt camera installed on telescopic booms. The new customer requirements for longer extensions on the booms necessitated spring-driven cable reels.

Penlink designed a compact slip ring with high-definition video combined with power and control signals. The final solution is installed with military-grade connectors into our stainless steel cable reels.



CUSTOMER CASE

Moving Platform

In this project, the customer was developing a moving platform that moves up and down like an elevator. The platform was intended to be used both as a bar and restaurant, requiring high power consumption for various systems, a long lifetime in a harsh environment, and several independent control systems, video, and data. The initial setup required six different cable reels.

Penlink delivered a single motorized cable reel with an electro-optical slip ring and a customized cable. All components are designed for the harsh marine environment and extended lifetime.



CONTACT INFORMATION

info@penlink.se

+46 (0)8 4011010

Penlink AA, Västberga Allé 5,
SE-126 30 Hågersten, Sweden

PENLINK

With Penlink's knowledge and experience in slip rings and our network of cable reel and cable manufacturers, we can offer a full system delivery of both larger and smaller reels to meet all types of environmental requirements.