

PENLINK

INTRODUCTION

Components That Delivers Safety and Precision in Pile Driving Operations

Search no further, Penlink provides expertise manufacturing and design when it comes to pile driving solutions and other applications in the same category.

Our products (swivels, slip rings and magnetic encoders) provide reliability and minimizing of downtime. We can guarantee you that our products will keep your application going for a long time as our solutions handles high vibration and harsh environments.



PENLINK SOLUTION

Why You Should Consider Our Solutions

Reliable And Highly Configurable: We build the units upon required need together with our experience from various applications. Complete quality control, design, manufacture and qualified to premium solutions.

Standard, Customization & Retrofit: Big part of our business comes to retrofitting present components in various application. We have the ability to provide solutions according to the various challenges that can arise in your application.

The Application Must Function Reliably: When used outdoors on building sites, the units that we supplied are according to the environmental requirements. We do quality control and testing are done on each component before installation.

Technological Advantages

- Applied for harsh environment
- Output/connections options
- Low heat generation
- Corrosion resistance
- Protection degrees
- High performance
- Combine solution
- Highly configurable





SWIVEL SOLUTIONS

4 Passage Custom Swivel: Direct OEM 1:1 Replacement

4 passage rotating union designed and customized for a tracked vehicle. Features include a direct OEM replacement design - integrating into the existing space and bolt patterns.



6 Passage Custom Swivel: Direct Replacement For Excavators

6-passage rotary union designed as a direct OEM replacement installed on a mobile excavator. Features include a customer-specified design that offers increased service life and cost reduction.



Multi Passage Custom Swivel: With Improved Coating For Better Outdoor Protection

Multichannel passage rotating union for the OEM machines. Customized to operate on various application with coated surface to increase protection from outdoor impact.

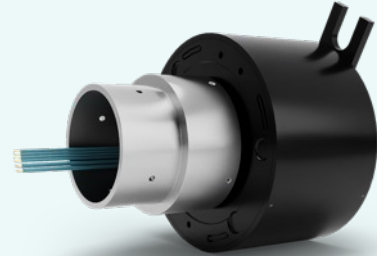




SLIP RING SOLUTIONS

Modified Standard Solution Winch Slip Ring For OEM Manufacturers

Modified standard solution to fit installation on a OEM winch mounted on a mobile crane. Tolerance to high shock and vibration to increase life cycle and various transmission.



Slip Ring Design For Excavator Cabin With High IP Rating

Modular 1:1 interface installation for OEM excavator cabin. High protection degree to handle various of whether conditions with the option of getting connectors/pins installed.



Modular Solution Enabling Different Mounting on Excavators

The unit is build on a bas module to formfit customers different mobile machines depending on electrical specification. It uses the same housing with different mounting flange for easy installation.





ENCODER SOLUTIONS

The AV115 Encoder

The AV115 modular magnetic encoders fit standard 115mm flange motors. Adapters are available to fit European B-flange (85mm/100mm BC) motors.

First, the magnetic sensors are fully potted to withstand dirt and liquids. No glass disks, no optics to clog. There are no moving, wearing parts!



The AV56 Encoder

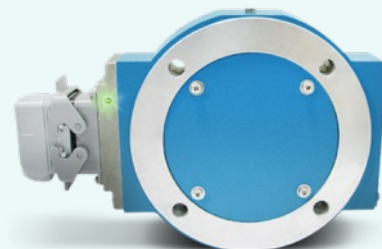
This encoder is a great fit for heavy mill duty applications. It has a standard fit for 4.5" C-Face motors. The stainless steel AV56S is designed for washdown and marine duty. This encoder features simple installation, durable construction, and clear diagnostics to eliminate encoder-related downtime.



The AV850 Encoder

This encoder is great for heavy mill duty applications. It has a fit for standard 8.5" FC-Face motors. Quite simply, the AV850 is designed to eliminate encoder failures.

All AV850 electronics are fully encapsulated. There are no moving wearing parts. AV850 sensors locate over 4X farther from the rotor than the competition; no more sensor/rotor grinding!





CONTACT INFORMATION

info@penlink.se

+46 (0)8 4011010

Penlink AA, Västberga Allé 5,
SE-126 30 Hågersten, Sweden

PENLINK

No matter what solutions you are looking for we have the knowledge and resources to design and manufacture customized options if needed. Which makes it easier for you to get the right component for your project.